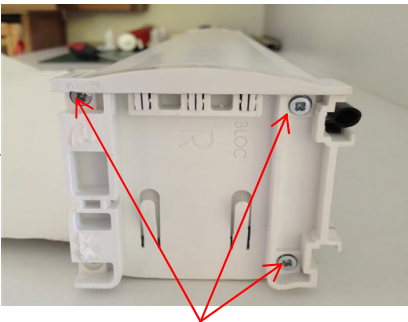


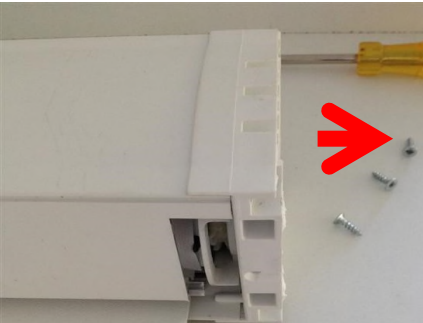
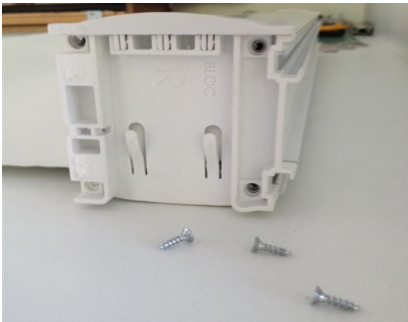
# BlocOut XL-REPLACING BROKEN CHAIN & CLUTCH



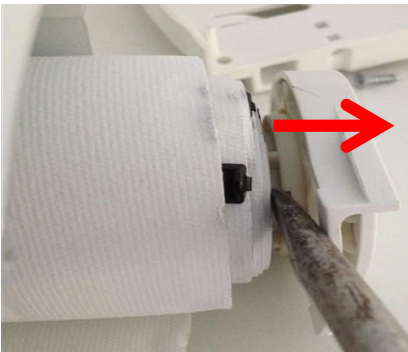
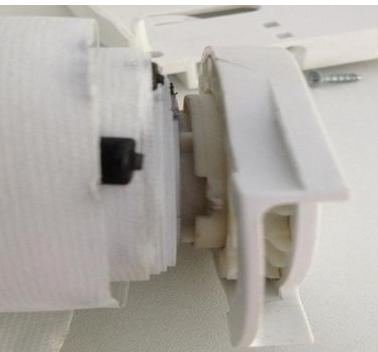
**BROKEN CHAIN**



**TAKE OUT THE 3 SCREWS**

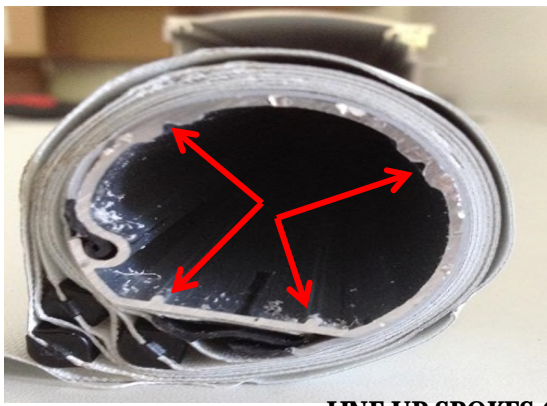


**PULL PLASTIC CASSETTE END OFF**

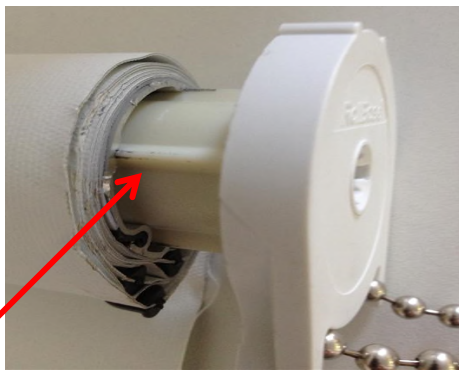


**PRISE OFF CLUTCH FROM BARRELL**





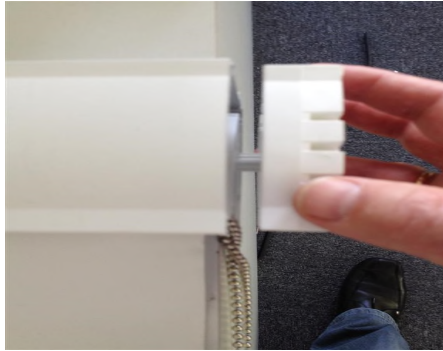
**LINE UP SPOKES ON CLUTCH TO THE INSIDE OF BARRELL**



**SLIDE IN CLUTCH**



**REPLACE AND RE-ALIGN CASSETTE END**



**REPLACE SCREWS AND MOUNT BLIND**

